

# **NEWBURYPORT PUBLIC SCHOOLS**



## **FRANCIS T. BRESNAHAN SCHOOL PRESCHOOL INFORMATION NIGHT**

**JANUARY 23, 2024**

# Agenda

*7:00-7:05 p.m.*

Welcome and Introduction of Staff

*7:05-7:30 p.m.*

General Session

Bresnahan School Information

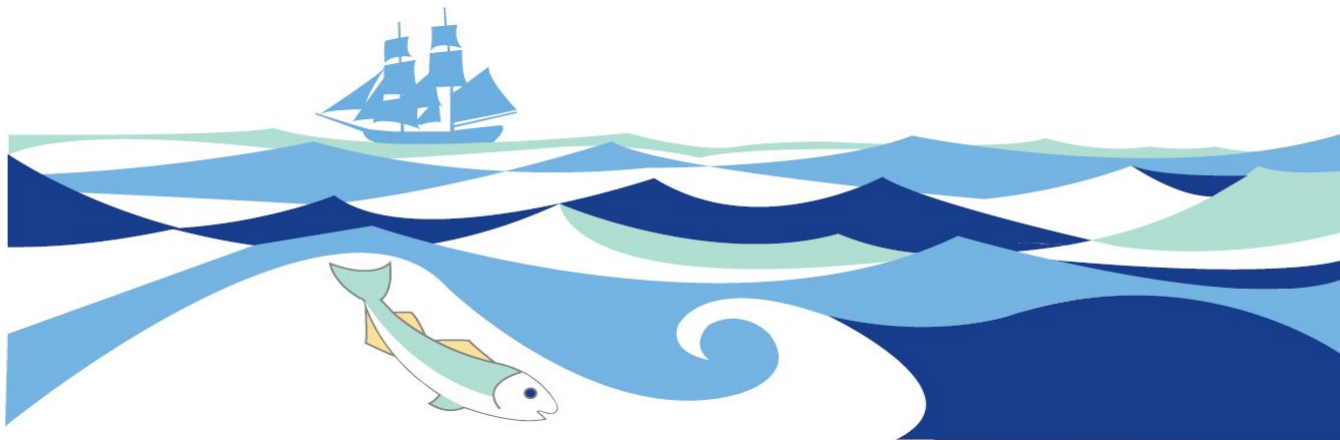
Preschool Programming

Registration and Lottery Procedures

*7:30-8:00 p.m.*

Tour Preschool Classrooms

Visit information tables



# Who Are We?

## Administration

Sean Gallagher - Superintendent

Deb O'Connor - Director of Student Services

Katie Vozeolas - District Nurse Leader

## Bresnahan Administration

Jamie Sokolowski - School Principal

Allison Byrnes - Assistant Principal

Jeanna Guardino - Special Education Team Coordinator

Elise Comeau - Early Intervention Coordinator

## Integrated Preschool Teachers

Suzanne Simon

Giovanna Foster

Tanasi Fahey

Karen Sullivan

Sam Maguire

Chelsey Howell

## SPED Service Providers

Jill Grelle - *Physical Therapist*

Pam Vecchio, Mary LaFleur, Jessica Marzi

*Occupational Therapists*

Candi Skiba and Julie Clemente

*Speech and Language Pathologists*

## Other Supports

Zinta Gulens, Early Childhood Nurse

Colleen Wile and Melanie Manseau

*School Adjustment Counselors*

Holly Curtis - *School Social Worker*

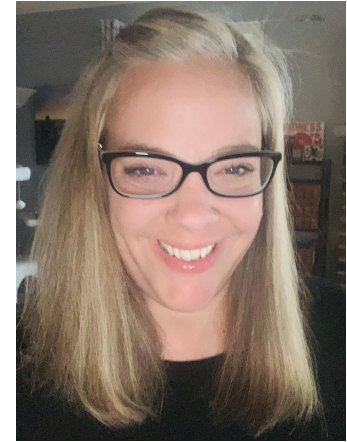
Dr. Michele Clark - *School Psychologist*



# Meet the Teachers



**Miss Sue** has worked in preschool for more than 25 years. She fell in love with the integrated model when her own children were in preschool as it taught them compassion for others and fostered a lifelong love of learning. She frequently reminds her students to never stop learning! An artist in a prior career, she employs creativity and fun in all aspects of her student's day.



**Miss Tanasi** has been teaching in the Newburyport Public Preschool Program since 2013. She has a passion for preschool aged child development and loves seeing the growth of all her students each year! Her fun fact is she enjoys having “Miss T’s Dance Parties” and dancing to Best Day of my Life!

**Miss Giovanna** has been teaching in the Newburyport Public Preschool Program since 2011. She has a passion for social emotional learning. She provides an environment that encourages students to express their feelings as they work through conflict and setbacks. Miss Giovanna loves spending time at the beach.



# Meet the Teachers

**Miss Karen** has been teaching preschool for 16 years and can't imagine teaching any other grade. She loves the imagination, creativity, curiosity and laughter of these youngest learners. Miss Karen is proudly a crazy cat lady and yoga enthusiast.



**Miss Sam** has been teaching in the Newburyport Public Preschool Program since 2016. She has always loved working with children of all ages, but especially has a passion for teaching preschool because it's so much fun learning through play! One the weekends you may spot Miss Sam walking on the rail trail.



**Miss Chelsey** has been teaching in the Newburyport Public Preschool Program since 2022. She loves being creative with her students. She loves all dogs and going camping!

# What is an *Integrated* Preschool?

The Newburyport Public Schools' Preschool Program:

- **Inclusive, developmentally** appropriate
- Children ages **three to four years old**
- **Wide variety** of backgrounds, skill levels and abilities
- **Peer models**



[Massachusetts Guidelines for Preschool Learning Experiences](#)

[National Common Core Standards](#)

# Why Choose Our Preschool?

- Beautiful state of the art facility with bright and expansive **classrooms**, advanced **technology** and equipment, and fun **play areas**!
- All teachers are **licensed** by the State of Massachusetts
- Classes are **well supported** by 1 teacher and one Instructional Assistant. There are up to 15 students per class. Classrooms are also supported by many **service providers**.
- Students entering our preschool program will transition to their elementary experience for grades K-3 in the **same building** and will have the opportunity to spend up to 6 years at the F.T. Bresnahan School!
- Our **full service model** including specialists, special educators, and classroom teachers provide a rich balance of best practices.



# Program Overview

## We believe:

- All children have **individual differences** which are best supported through high quality teaching and **differentiated** instruction.
- Young children **learn by doing!** Classrooms are play based with **hands on** meaningful activities.
- A rich variety of **developmentally appropriate** experiences that meet all **learning styles** are integrated in the curriculum through individual, small group and large group activities to help children engage in academic and social experiences.
- Every child will feel **valued, respected** and part of a classroom **community** as well as a greater community in the Bresnahan School.





# Learning Through Play

- Professional, respectful and student **focused** staff members
- **Inclusive** environment for all learners
- Universal supports provided to **support** learning for all
- **Visuals** to support classroom routines and expectations
- **Developmentally** appropriate manipulatives
- **Integrated** model - incorporating speech and language support, OT and PT support
- **Social-emotional** supports, including the Zones of Regulation & Social Thinking



# CLASS

schedule

## Take a Look at Our Day



Arrival/Greeting/Wash/  
Breakfast/Snack  
Morning Meeting  
Centers  
Outdoor Play & Learning  
Lunch/Towel Time  
Small Groups  
Special  
Closing Meeting  
Dismissal



# Programs Offered

PROGRAM	DAYS/TIME	TUITION
Preschool (3 years old by Aug 31, 2024)	MONDAY-FRIDAY 8:30 am-1:15pm	\$ 550 monthly \$ 5,500 annually
Pre-K (4 years old by Aug 31, 2024)		

## Website and Registration Forms

The screenshot shows the website for Francis T. Bresnahan Elementary School. The header includes the school name, address (333 High Street, Newburyport, MA 01950), and contact information. The main navigation menu includes Home, About Bresnahan, News, PreK - K, Grades 1-3, Our Faculty, Parents, Contact Us, and Let's Talk!. The PreK page is displayed, featuring a sidebar with a list of links: PreK - K, PreK, PreK Programs, PreK Registration Process, PreK Registration Forms, PreK Tuition and Payment, PreK Lottery and Wait list, Kindergarten, Curriculum PreK - K, Child Find Screening Notice, Early Childhood Video, Early Release Days, and 2016-2017 Information Night. The main content area shows a large group photo of children in yellow shirts holding colorful balls, with the text 'PreK' and 'Integrated Preschool Program' below it. A hand cursor icon is pointing at the group photo.

# Registration & Lottery Process

- **Returning students or siblings of students**
  - January 15 – January 26 (school days only)
    - between 10:00 AM - 2:00 PM
- **New students**
  - February 1-16 and February 26 -29 (school days only)
    - between 10:00 AM - 2:00 PM
- **Lottery** will be held on Wednesday, March 6, 2024
  - Lottery results will be posted Thursday, March 7, 2024
- **Enrollment** letters will be mailed home and returned by mid-March



# Required Forms & Complete Applications

Only **complete** applications will be accepted. The following documents are **required** to obtain a lottery number:

- \$300.00 Registration fee, check or money order made payable to the Newburyport Public Schools (no cash or credit accepted)
- Preschool Application Form
- Your child's birth certificate (copy)
- Your child's most recent health record including lead test, immunization and physical (copy)
- Newburyport Public Schools Enrollment Form
- Certification of Address Form
- Home Language Survey
- Parent Questionnaire



# Bresnahan Health Services



Zinta Gulens, RN  
Pre-K, K, Gr. 1

**Meet our Nurses**  
2 full time Dept of Ed.  
Certified RN School Nurses



Michelle Thivierge, RN  
Gr 2-3

## **Responsibilities:**

- Acute and Chronic care for illness and injury
- Mandated Immunization compliance and mandated screening
- Care Coordination
- Development of Individual Health Care Plans/Emergency Health Plans for students with health concerns
- Provide staff training and support

# Questions and Tours

## Room 138 and Room 137

